

Eaton – convincing in terms of safety, performance and operational availability.



X assemblies – New installation kits for XF fields

New installation kits for even more switchgear assemblies: Eaton extends fixed installation technology for xEnergy switchgear systems by new, more comprehensive kits.

If so far only switchgear assemblies up to an installation **depth of 275mm** could be implemented, Eaton is now paving the way for **up-to-475mm** appliance combinations, thanks

to its newly developed, more comprehensive installation kits. Thus, from now on, all combinations with Eaton NZM1-to-NZM3 circuit breakers are possible.

The new installation kits are available for both the XF Form 4b fixed installation and XF Form 4b Box Solution, the Motor Control Center solution by Eaton.



Powering Business Worldwide

© 2014 by Eaton Industries (Austria) GmbH, Scheydgasse 42, A-1215 Vienna. Subject to technical modifications. No responsibility is taken for misprints or errata. Prices excl. of VAT, not cartel-fixed. The products presented are part of the comprehensive Eaton offer. For more information, please contact your Eaton consultant.

www.eaton.eu

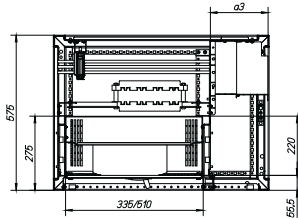
XF outgoing feeder sections dimensions

XF field with NZM1-3 line circuit breaker installation, form 2

Field depth 600mm

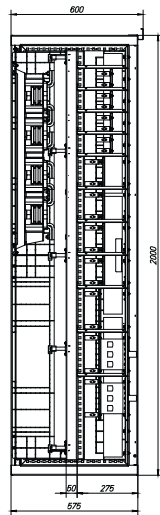
XSMFIB0606 (installation kit type)
Installation kit for module/switch combinations with up to 275mm depth

Top view



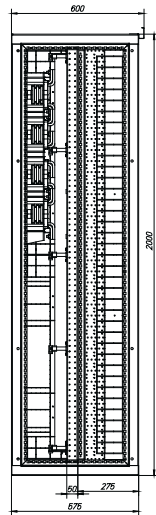
XF_NZM1_3_F4_600_D

Side view
without side mounting panel



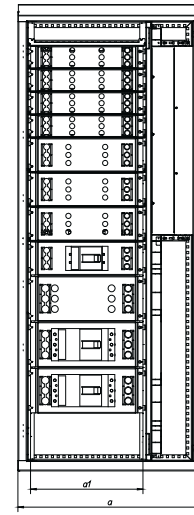
XF_NZM1_3_F4_600_S_oMS

Seitenansicht
with side mounting panel



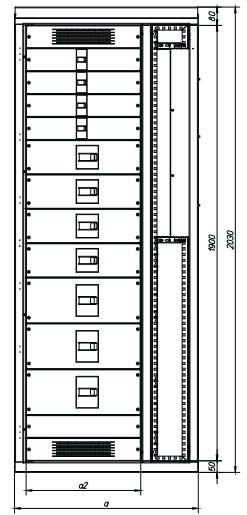
XF_NZM1_3_F4_600_S_iMS

Front view
with front panels



XF_NZM1_3_F4_600_V_oFP

Front view
without front panels

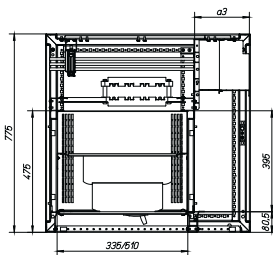


XF_NZM1_3_F4_600_V_iFP

Field depth 800mm

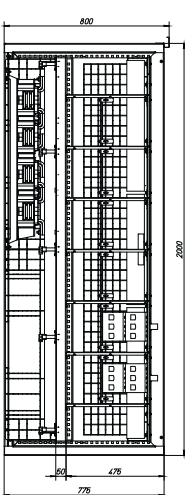
XSMFIB0608 (installation kit type)
Installation kit for module/switch combinations with up to 475mm depth

Top view



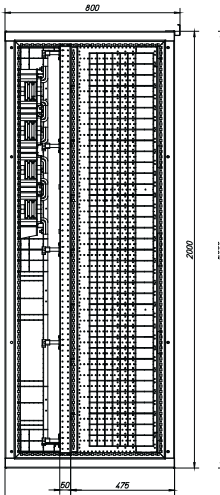
XF_NZM1_3_F4_800_D_350

Side view
without side mounting panel



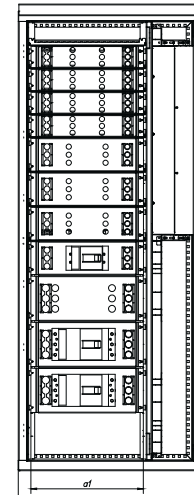
XF_NZM1_3_F4_800_S_oMS_350

Seitenansicht
with side mounting panel



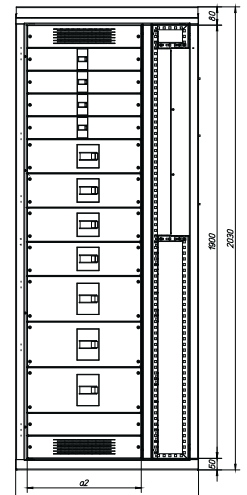
XF_NZM1_3_F4_800_S_iMS_350

Front view
with front panels



XF_NZM1_3_F4_800_V_oFP_350

Front view
without front panels



XF_NZM1_3_F4_800_V_iFP_350



Powering Business Worldwide

Further information, instruction leaflets and building manuals can be found on our partner portal www.xEnergy-partner.com as well as at www.eaton.eu