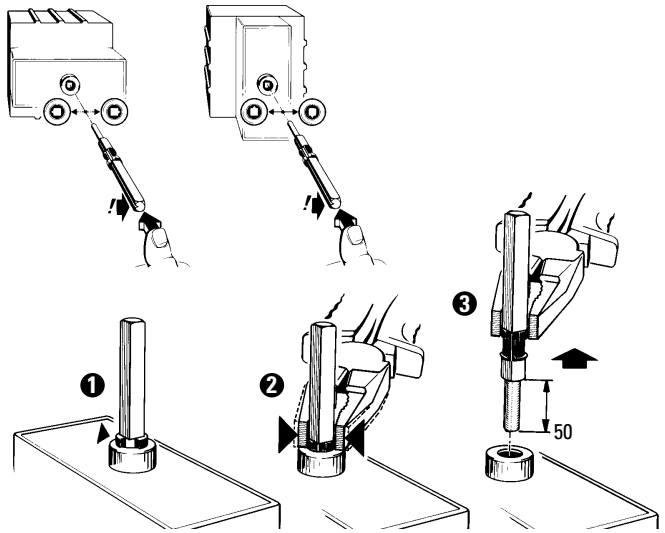


Montage / Installation / Einbau / Montage

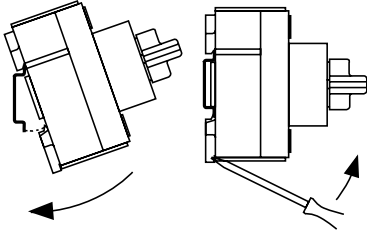
**Samenstelling / Assembling /
Zusammenstellung / Composition**

Bedieningsas / Operating shaft /
Betätigungsachse / Arbre de commande

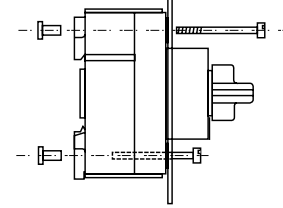


**Bevestigingsmogelijkheden / mounting options /
Befestigungsmöglichkeiten / possibilités de fixation**

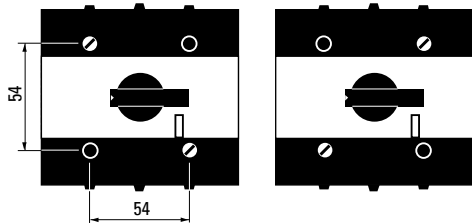
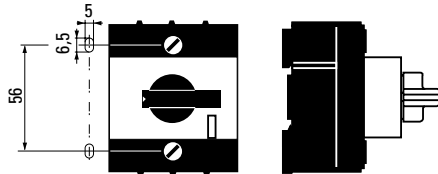
Hoedprofiel / Top hat rail /
Hutschiene / Profilé chapeau



Voorzijde / Front /
Vorderseite / Face avant

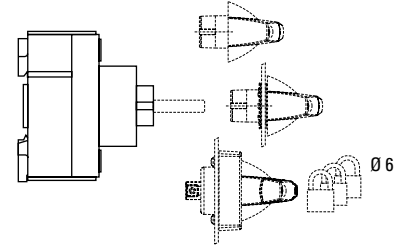


Bodem / Bottom / Boden / Plaque de fond

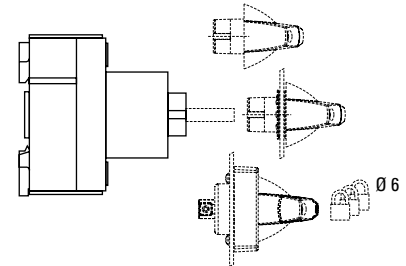


Uitvoeringsvorm / Version / Ausführungsform

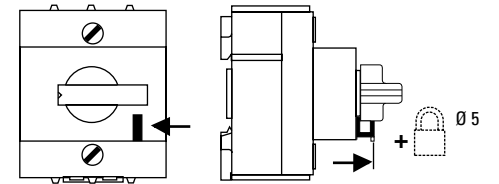
DMM 40 - 63






DMM 125

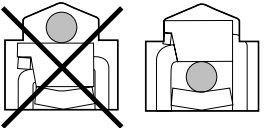
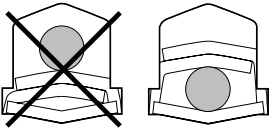
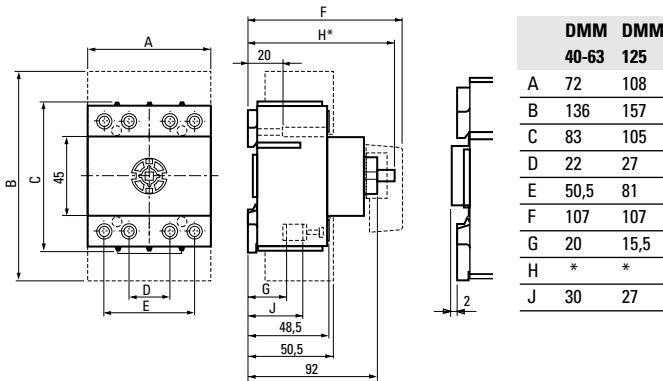


DMM 40 - 63 - 125



Aansluiting / Connection / Verbindungen / Raccordement**Aansluitbereik / Connection capacity /
Anschlußräume / Capacité de raccordement**

Geleider / Conductor Leiter / Conducteur mm ²	DMM 40 - 63	DMM 125
	2,5÷16	
	1,5÷25	6÷70
	1,5÷25	6÷70
Aanhaalmoment / Tightening torque Anzugsdrehmoment / Couple de serrage	3 Nm	7 Nm

**Inklemming / Clamping /
Einklemmung / Connexion à pince****DMM 40 - 63****DMM 125****Afmetingen / Dimensions / Abmessungen**

* Afhankelijk van de toegepaste bedieningsas / Depending on length of operating shaft /
Abhängig von der verwendeten Betätigungsachse / En fonction de l'arbre de commande utilisé

Accessoires / Accessories/ Zubehör/ Accessoires

- Asondersteuningsset / Shaft supporting set / Achsunterstützungssatz / Ensemble de support pour l'arbre
- Doorvoering met standengrendeling / Escutcheon with position locking / Durchführung mit Stellungsverriegelung / Traversée avec verrouillage de position
- Afschermkap / Protective cover / Abschirmhaube / Capot de protection
- Hulpschakelaarset / Auxiliary switch set / Hilfsschaltersatz / Ensemble d'interrupteur auxiliaire
- Aansluitset voor DMM 125 / Connection set for DMM 125 / Anschlußsatz für DMM 125 / Ensemble de raccordement pour DMM 125

Eaton Electric B.V.

Postbus 23

7550 AA Hengelo

Tel.: 074 246 32 22

Fax: 074 246 33 02

steunpunt@eaton.com

www.et-installateur.nl

© 2009 Eaton Electric N.V. Gedeeltelijke of gehele overname van de inhoud is mogelijk na schriftelijke toestemming van Eaton Electric N.V. MBO 1991017G01 001/SWB/SG/Januari 2009

EAT•N**LS-lastscheiders / LV-switch-disconnectors /
NS-Lasttrennschalter / interrupteurs-sectionneurs BT**

MBO 1991017G01 001

Dumeco types DMM 40, DMM 63, DMM 125**CE**