

Power distribution for IT equipment

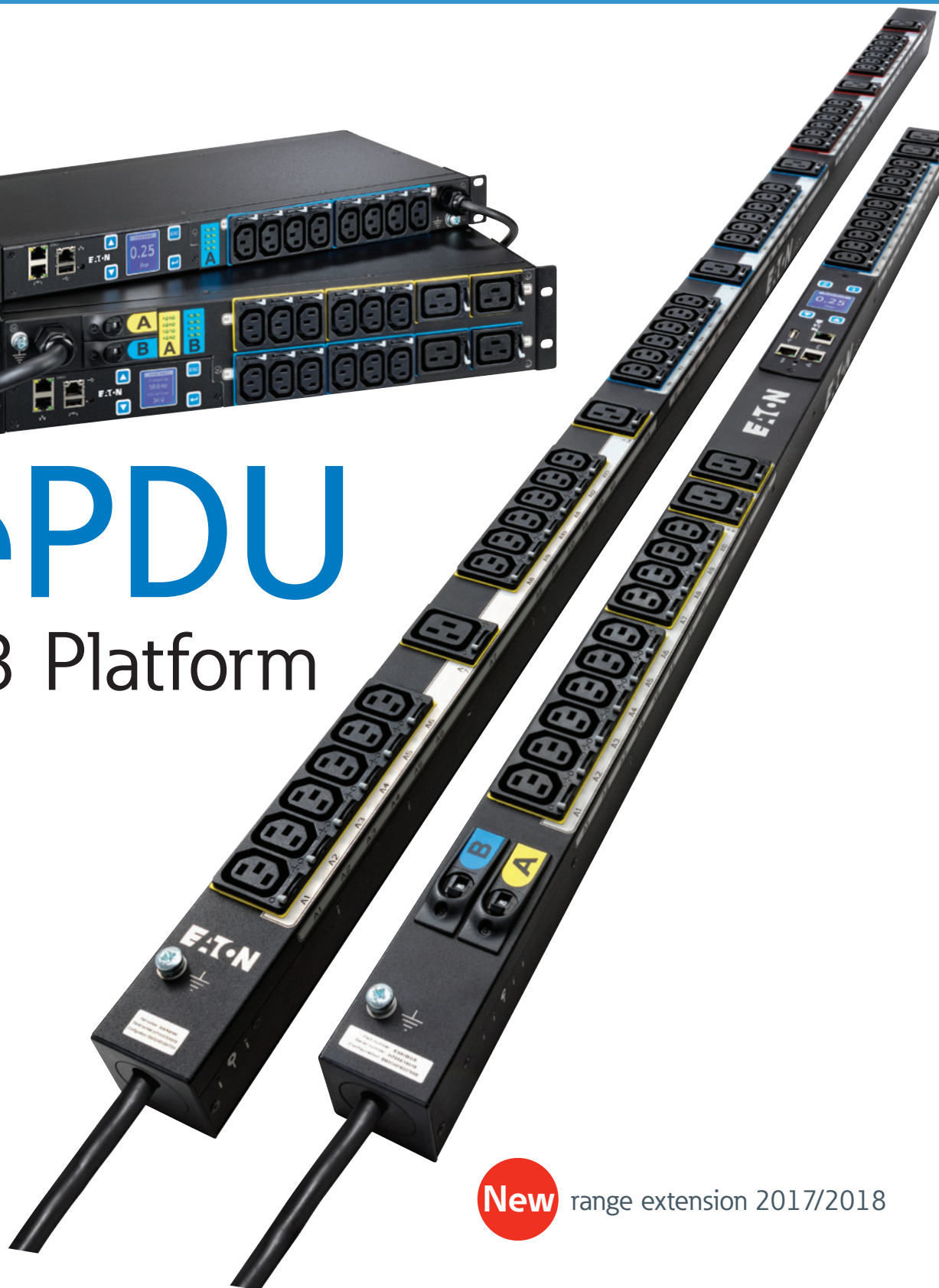
Basic
In-Line Metered
Metered Input

Metered Outlet
Switched
Managed



ePDU

G3 Platform



New range extension 2017/2018

EATON

Powering Business Worldwide

Outlet grip functionality on standard IEC cable

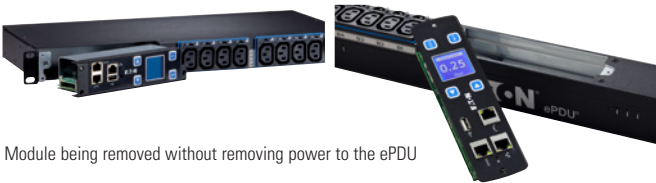
Eaton's patent-pending IEC outlet grip secures plugs in place with a lever-actuated grip that's integrated into each outlet. Once the levers click into the grip position, the plugs are secured from accidental disconnect due to bumps or vibrations without the need for special power cords.



O is unlocked, + is grip engaged

Advanced LCD pixel display with hot-swap capability

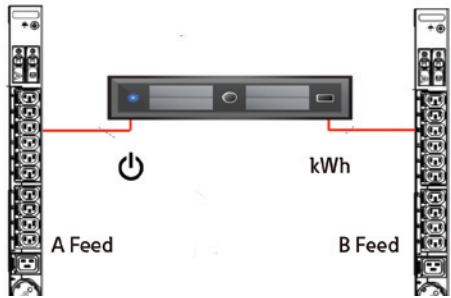
Eaton's new hot-swap eNMC (ePDU Network Management and Control) module can be replaced without the need to power down your rack. Increase uptime while enhancing serviceability and saving on unnecessary service calls. The menu-driven pixel display allows for easy setup and troubleshooting.



Module being removed without removing power to the ePDU

Device reboot and measurement across A and B feed

When connecting multiple source input servers to an A and B feed power source, the daisy-chain capability allows you to group power supplies across the ePDU. As a result, all the power supplies are controlled with a single action, which saves time rebooting servers with two to six power supplies. The power consumption is available for each device.



Typical server with multiple power inputs powered by two ePDUs

Universal Mounting

Models include both rear and side button mounting system and Eaton's patented variable mounting system.



Outlet switching

Remotely control devices by powering on or off individual outlets. Save time and operating costs by rebooting machines from your control center without costly site visits.

Sequential start up

Make sure your servers start sequentially to avoid in rush current and start your database before the application.



Green LED signifies power on and red is power off to outlet

One percent billing grade accuracy

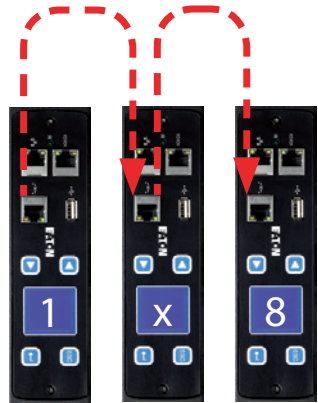
±1%



ePDU G3 provides one percent revenue-grade power monitoring for higher accuracy in department billing or colocation data centers. Effectively measure power usage to all outlets or individual outlets.

Daisy chain eight units from one IP address

Eaton's new patented daisy-chain capability allows up to eight ePDUs to share the same network connection and IP address. Unlike competitive rack PDUs that require a dedicated IP address for best performance, Eaton technology provides a 87% percent reduction in network infrastructure costs.



A and B power PDU sharing a network connection via daisy chain

Color-coded outlet sections

Color-coded outlet sections match a corresponding circuit breaker to easily identify which one feeds corresponding outlets and prevent unbalanced loading that would unnecessarily trip a breaker.



Features and benefits

Basic	All technologies	Low-profile form factor: Provide zero interference into the rail space
		High 60°C operating temperature: Fully functional in high operating temperature environments, resulting in reduced cooling costs
		Integrated IEC outlet grips: Integrated lever-actuated grip that easily secures plugs to prevent accidental disconnect
		Color-coded outlet sections: Color-coded outlet sections match corresponding color-coded circuit breakers to simplify load balancing
		Flexible mounting options: Button mounting on rear & side + variable mounting system
Standard	All technologies except Basic	One percent billing grade accuracy: Revenue-grade power monitoring for higher accuracy to help optimize power utilization
		Remote site management: Save time from onsite visits
		Hot-swap meter: Remove meter without power disruption to increase uptime while enhancing serviceability
		Phase and section metering: Meter color-coded sections to control power utilization
		Advanced LCD pixel display: Allow for easy IP setup and troubleshooting
Advanced	Managed and Metered Outlet	Daisy chain (share network connection/IP address): Share the same network connection and IP address for up to eight rack PDUs, which will reduce network infrastructure costs
		Cybersecurity: The firmware is updated on regular basis to keep the ePDU cybersecurity to highest standard.
	Managed and Switched	Measure power consumption at outlet level: Acquire precise data and gain detailed energy analysis to make informed decisions and assist with effectively deploying equipment
		Measure Level 3 PUE: Measuring power at the outlet level allows users to measure Level 3 Power Usage Effectiveness (PUE), which provides the possibility of transforming billing into revenue or utility discounts
		Outlet switching: Remotely control devices by powering on, off or rebooting individual outlets and set sequential start up across A&B feed
		Group reboot for A and B feed: Group multiple power supplies across the rack PDU to control all with a single action, saving time when rebooting servers with two or more power supplies
		Turn off unused outlets: Control unauthorized use

Make more effective management decisions with intelligent power, space and environmental condition monitoring.

IPM Infrastructure helps to bridge the gap between facility and IT management by providing you just enough information, when you need it and where you need it.



Environmental monitoring including temperature and humidity with more functionality to follow.

Simple IT asset management including business prioritization capabilities.

Power chain monitoring including power kW, energy consumption (kWh), phase and circuit balancing.

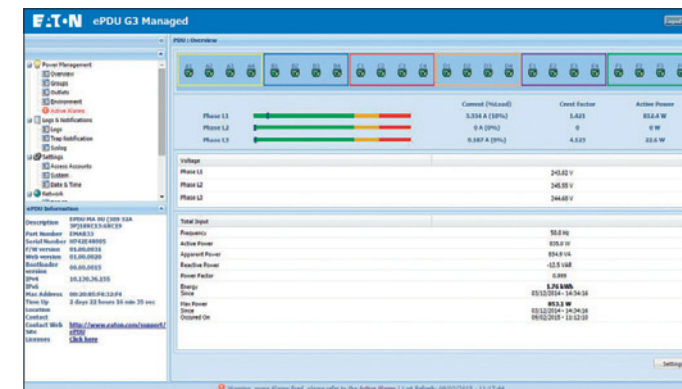
Trending analysis via an intuitive web interface with auditable logs and email alerts.

www.eaton.eu/ipminfrastructure

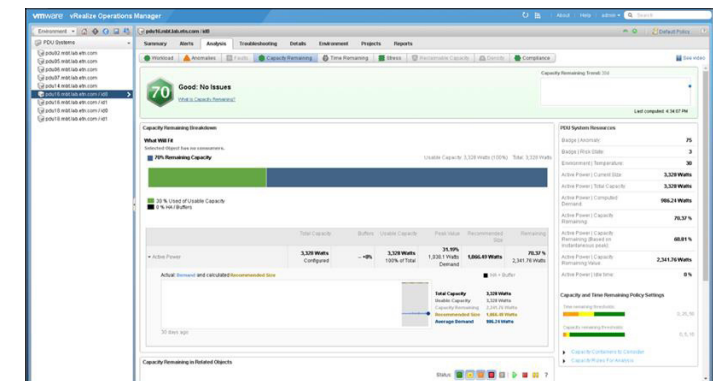
Ensure business uptime and monitor ePDUs and It equipment with Intelligent Power Manager

Full integration into VMware and Citrix with Intelligent Power Manager

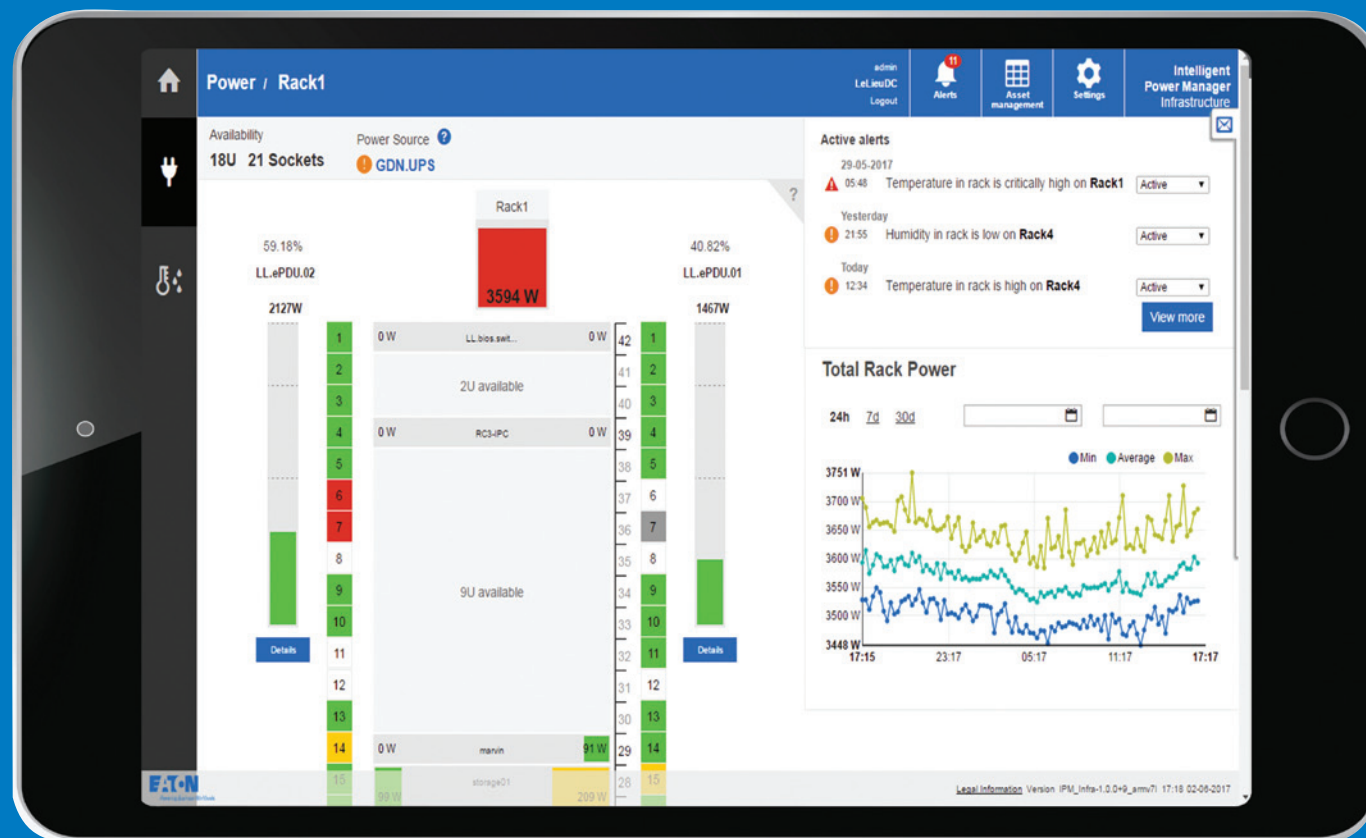
- Trigger VM migration or VMware Site Recovery Manager (SRM)
- User configurable alerts on the ePDU G3 work with Eaton's Intelligent Power Manager (IPM) software to trigger actions
- Trigger automatic migration of virtual servers in the event of a power failure via UPS, ePDU alarm or threshold, temperature/humidity or dry contact event
- Full integration in VMware interface



Detailed web-based interface on ePDU G3

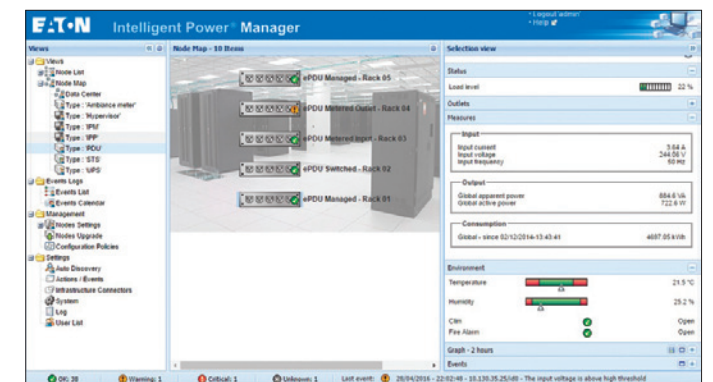


ePDU integration into vRealize Operations Manager (coming in 2018)



Intelligent Power Manager offers supervision and control through a single interface

- ePDU and UPS Management
- En masse Configuration of ePDU
- En masse Update of ePDU






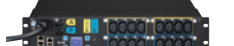




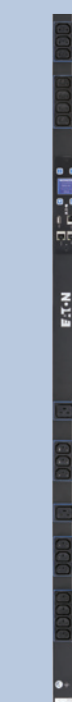


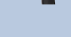
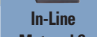


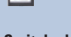

Eaton collaborates with the leaders in converged and hyper-converged infrastructures and provide lab-validated power management solutions to ensure high uptime of IT systems and data integrity in case of power and environmental issues.



ePDU G3 Key features & technical specification

Range extension 2017

Also available in 1U 2U

																					
Basic features	Built-in IEC outlet eGrip retention, retains all standard IEC plugs				✓		NA		✓			✓		✓		✓		✓			
	Colour-coded outlet and branch circuits for simple load balancing				✓		NA		✓			✓		✓		✓					
	60°C Operating temperature				✓		✓		✓			✓		✓		✓					
	Flexible mounting options: Button mounting on rear & side + variable mounting system				✓		✓		✓			✓		✓		✓					
Standard features	Hot-Swap Control module with Advanced LCD + Optional Temp/Humidity sensor						✓		✓			✓		✓		✓					
	±1% IEC Class 1 Billing Grade Accuracy for V, W, A and kWh & Cisco EnergyWise compliant						✓		✓			✓		✓		✓					
	Phase Metering, Circuit Breaker Current Metering and Input Metering						✓		✓			✓		✓		✓					
	Daisy-Chain up to 8 ePDUs, reduce network infrasturcture costs						✓		✓			✓		✓		✓					
	En masse configuration and advanced action on virtual environnement via Eaton Intelligent Power Manager IT						✓		✓			✓		✓		✓					
	Power chain monitoring & Real time Intelligence on your Data Center, via Eaton Intelligent Power Manager Infrastructure						✓		✓			✓		✓		✓					
Advanced features	HTTPS, SSL, Telnet, FTP, SNMP, SMTP, DHCP, LDAP, RADIUS, DHCP 66/67 for Mass Configuration						✓		✓			✓		✓		✓					
	Circuit Breaker Status Monitoring											✓		✓		✓					
	Outlet and IT Equipment Metering across A and B feed											✓		✓		✓					
	Level 3 PUE measurements											✓		✓		✓					
	Turn off unused outlets to control commissioning												✓		✓		✓				
Outlet and IT Equipment Switching/reboot/sequencing across A and B feed													✓		✓		✓				
																					
Input Type / Rating (A)				Outlet type: Qty	Breakers	Nominal Power	Basic p/n	Dimensions L x W x D, mm	In-Line Metered & Dual p/n	Dimensions L x W x D, mm	Metered Input p/n	Dimensions L x W x D, mm	Metered Outlet p/n	Dimensions L x W x D, mm	Switched p/n	Dimensions L x W x D, mm	Managed p/n	Dimensions L x W x D, mm			
1 Phase	C14 10A	8xC13		2.3kW	EBAB02	443x19"x53		1U	EMIH02	1Ux19"x203											
		12xC13		2.3kW	EBAB19	443x19"x53															
		16xC13		2.3kW	EBAB03	704x52x53		EMIB03	1070x52x53	EMOB03	1154x52x53	ESWB03	1154x52x53	EMAB03	1154x52x53						
	C20 16A	8xFR: 1xC19		3.7kW	1U	EFLX8F*	1Ux19"x80														
		8xGE: 1xC19		3.7kW	1U	EFLX8D*	1Ux19"x80														
		6xUK: 1xC19		3.7kW		EFLX6B*	52x19"x120														
		12xC13: 1xC19		3.7kW	1U	EFLX12I*	1Ux19"x80														
		16xC13		3.7kW		EBAB21	704x52x53														
		8xC13		3.7kW				1U	EMIH28	1Ux19"x203	1U	EMOH28	1Ux19"x203	1U	ESWH28	1Ux19"x203	1U	EMAH28	1Ux19"x203		
	IEC60309 16A	18xC13: 2xC19		3.7kW					EMIB09	1070x52x53											
		20xC13: 4xC19		3.7kW		EBAB22	1070x52x53		EMIB22	1070x52x53	EMOB22	1604x52x53	ESWB22	1604x52x53	EMAB22	1604x52x53					
		7xC13 : 1xC19		3.7kW									ESWB23	704x52x65							
		18xC13 : 2xC19		3.7kW					EMIB10	1070x52x53											
2 Phase	20xC13 : 4xC19		3.7kW		EBAB04	1070x52x53		EMIB04	1070x52x53			EMOB04	1604x52x53	ESWB04	1604x52x53	EMAB04	1604x52x53				
	IEC60309		3.7kW				EILB13	443x52x53													
	2 x IEC60309 16A		3.7kW				EILB24	443x65x52													
	12xC13 : 4xC19		7.4kW					EMIB06	1070x52x53												
	16xC13		7.4kW					EMIH06	2Ux19"x127						2U	EMAH06	2Ux19"x225				
	20xC13 : 4xC19		7.4kW	EBAB05	1070x52x53		EMIB05	1154x52x53		EMOB05	1604x52x53	ESWB05	1604x52x53	EMAB05	1604x52x53						
	28xC13 : 4xC19		7.4kW							EMOB71	1829x52x53			EMAB71	1829x52x53						
	36xC13 : 6xC19		7.4kW	EBAB08	1604x52x53		EMIB08	1604x52x53													
	IEC60309		7.4kW				EILB14	443x52x53													
	2 x IEC60309 32A		7.4kW				EILB25	443x65x52													
3 Phase	IEC60309 16A	21xC13 : 3xC19		11kW	EBAB20	1070x52x53		EMIB20	1070x52x53	EMOB20	1604x52x53	ESWB20	1604x52x53	EMAB20	1604x52x53						
		36xC13 : 6xC19		11kW	EBAB00	1604x52x53		EMIB00	1829x52x53												
		6xC19		22kW	1U	EBAB11	704x52x53		EMIB11	1070x52x53											
	IEC60309 32A	3xC13 : 6xC19		22kW		EBAB01	704x52x53														
		6xC13 : 12xC19		22kW				EMIB07	1604x52x53												
		18xC13 : 6xC19		22kW						EMOB33	1829x52x65			EMAB33	1829x52x65						
		12xC13 : 12xC19		22kW				EMIB12	1604x52x53					EMAB12	1829x52x65						
		24xC13 : 6xC19		22kW	EBAB32	1154x52x53		EMIB32	1604x52x53												
		30xC13 : 12xC19		22kW				EMIB34	1829x52x65												
	IEC60309		22kW				EILB15	443x52x53													
2 x IEC60309 33A		22kW				EILB26	443x65x52														

Need Something Special?

- Dedicated engineering teams in 3 centres of excellence are available to create your perfect ePDU
- Specific configurations or complete engineering projects
- Including national socket types, UK, French, Din/Schuko – including combinations of up to 3 types of outlet on an ePDU
- Colored ePDUs now available for the entire range, to easily identify your power source



Rack PDU selector



www.eaton.eu/ePDUG3

Changes to the products, to the information contained in this document, and to prices are reserved; so are errors and omissions. Only order confirmations and technical documentation by Eaton is binding. Photos and pictures also do not warrant a specific layout or functionality. Their use in whatever form is subject to prior approval by Eaton. The same applies to Trademarks (especially Eaton, Moeller, and Cutler-Hammer). The Terms and Conditions of Eaton apply, as referenced on Eaton Internet pages and Eaton order confirmations.

Eaton
EMEA Headquarters
Route de la Longeraie 7
1110 Morges, Switzerland
Eaton.eu

© 2017 Eaton
All Rights Reserved
Printed in Europe
Publication No. BR155016EN
November 2017

Eaton is a registered trademark.

All other trademarks are property of their respective owners.

Follow us on social media to get the latest product and support information.



Powering Business Worldwide