

Product Specifications											
UPS Rating		Max Heat Dissipation at 100% Load	Cabinet Dimensions WxDxH	Shipping Dimensions WxDxH	Approx. Weight Cabinet With 2 transformers	Approx. Weight Cabinet With 1 transformer	Approx. Weight Cabinet without Transformers	Approx. Weight Shipping with 2 Transformers	Approx. Weight Shipping with 1 transformer	Approx. Weight Shipping without Transformers	Floor Landing
kVA	kW	kW	mm	mm	kg	kg	kg	kg	kg	kg	kg/m^2
30	30	1.8	503x975x1810	750x850x2100	582	382	207	367	417	242	1.478
40	40	2.6	503x975x1810	750x850x2100	582	382	207	367	417	242	1.478

B

C

D

E

F

G

H

A

B

C

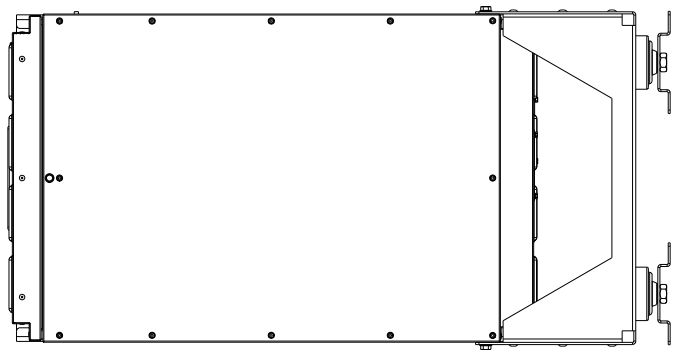
D

E

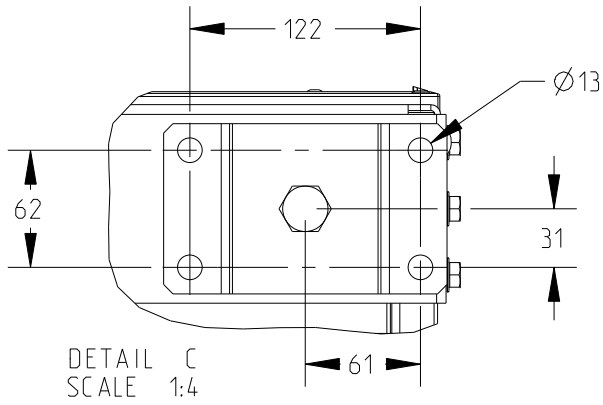
F

G

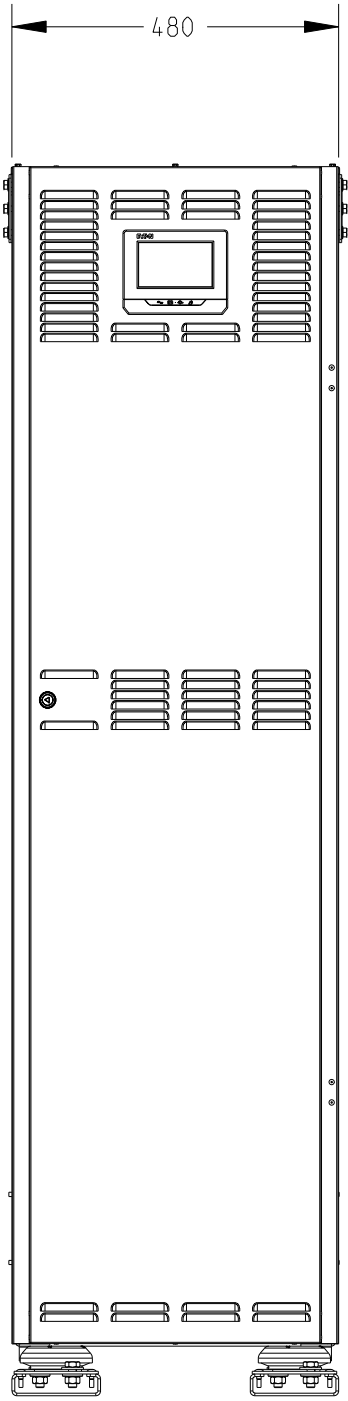
H



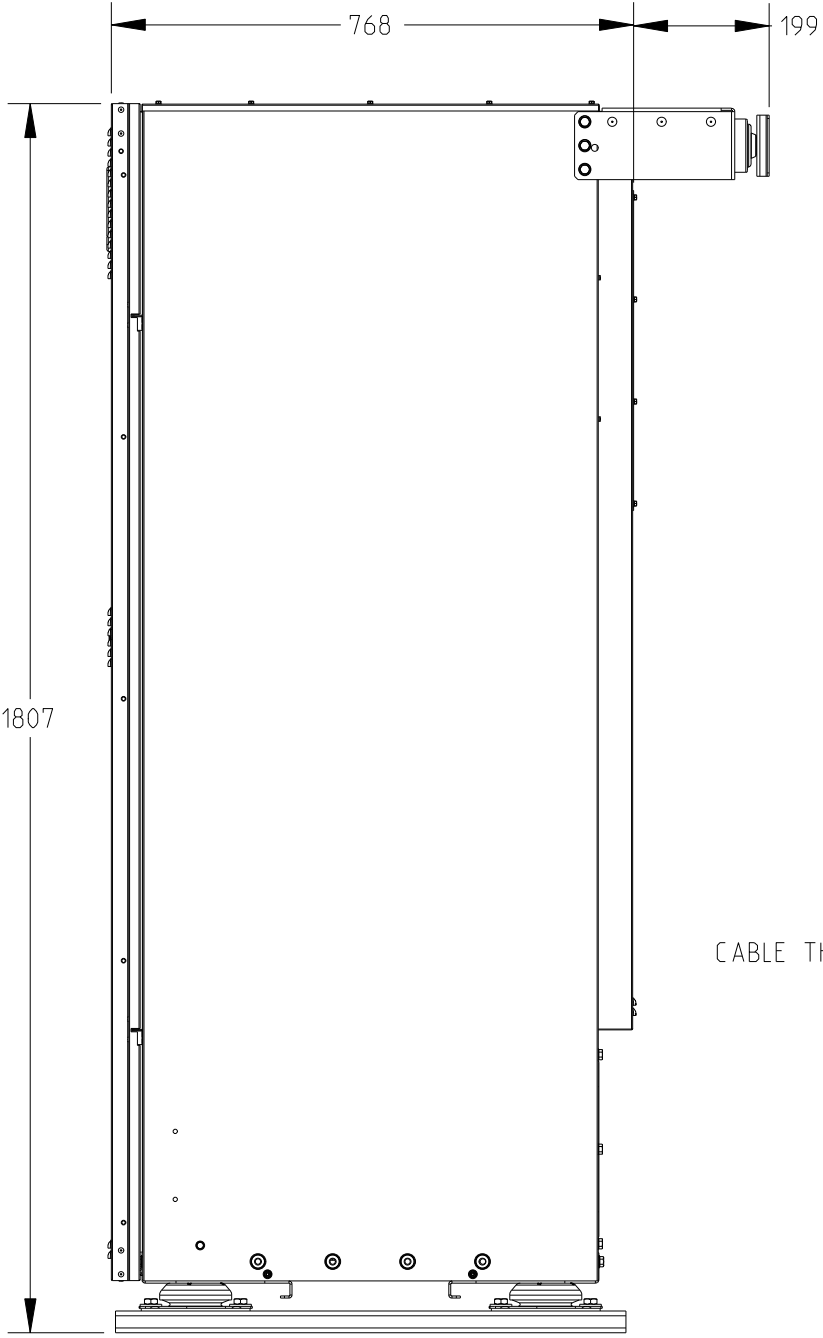
TOP VIEW



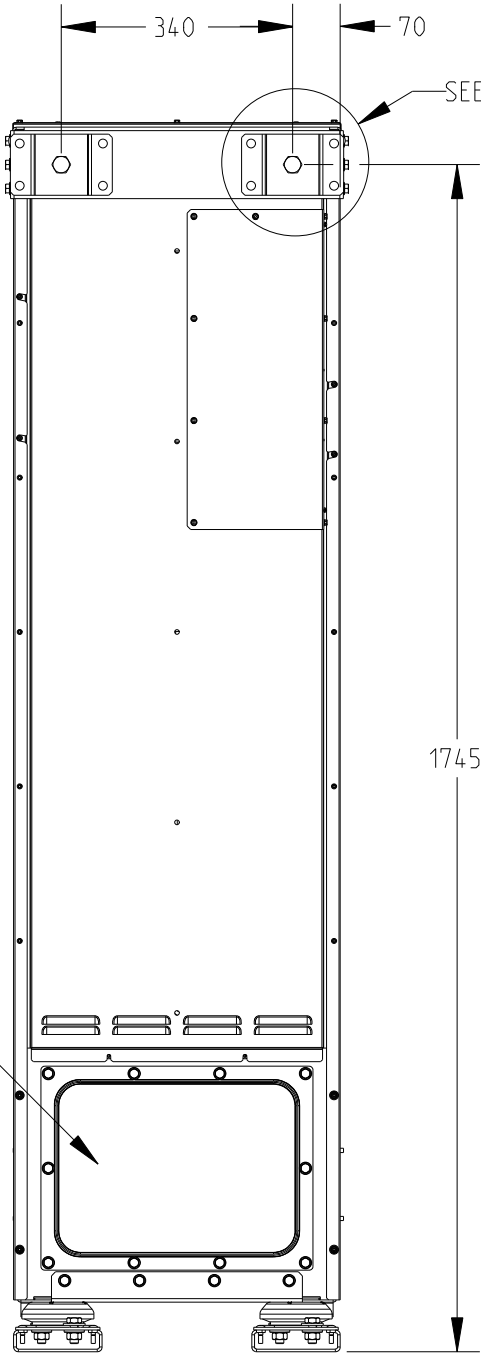
DETAIL C  
SCALE 1:4



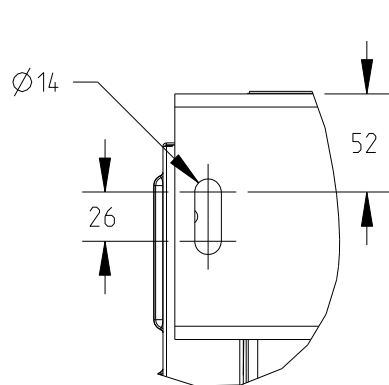
FRONT VIEW



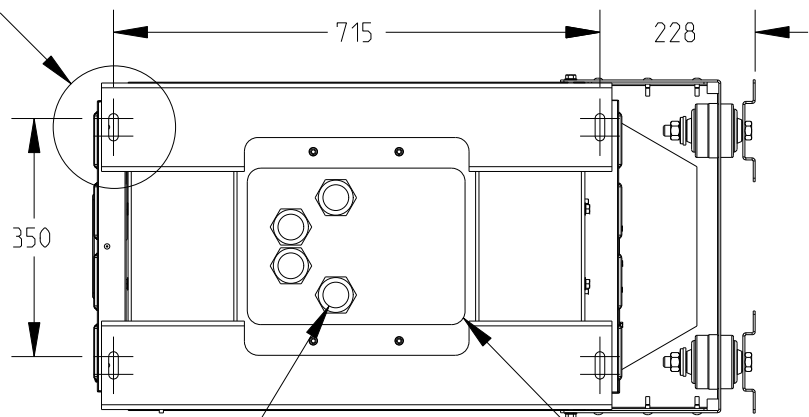
RIGHT VIEW



REAR VIEW



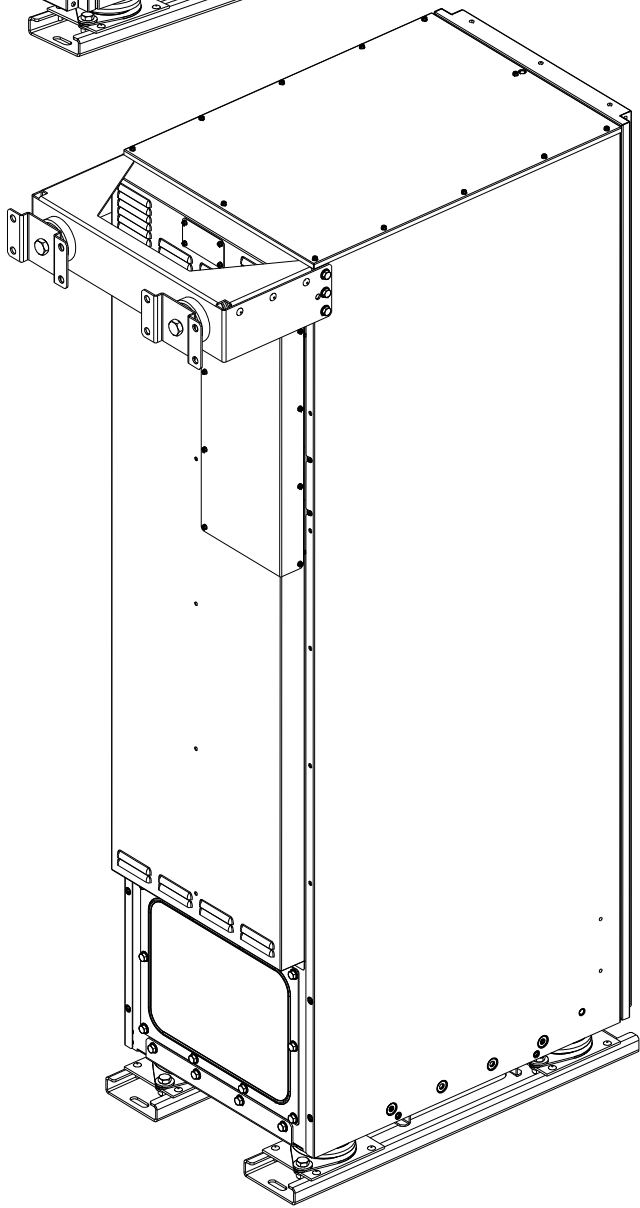
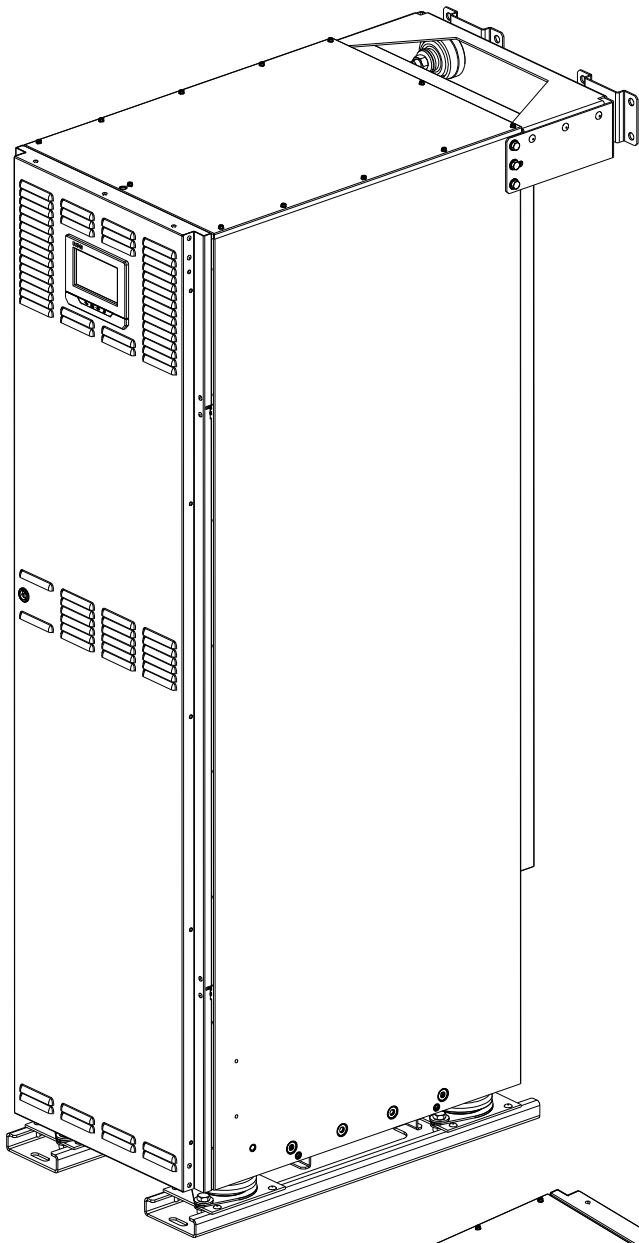
DETAIL D  
SCALE 1:4



Ø38 BOTTOM VIEW

CABLE THROUGH PLATE

- Notes:
1. The system must be installed in a temperature and humidity controlled indoor area free of conductive contaminants.
  2. Continuous ambient temperature range: 0-40 °C (32-104 F); Maximum relative humidity: 95% non-condensing.
  3. The UPS can be installed in Line-up-and-match or standalone configurations.
  4. The rear cable entries through the removable access gland plate are standard. Access plates shall be custom-modified to suit conduit sizes.



METRIC	THIRD ANGLE PROJECTION	EATON CORPORATION				
DIMENSIONS ARE IN MILLIMETERS AFTER PLATING. DIMENSIONS AND TOLERANCES IN ACCORDANCE WITH ASME Y14.5M-1994. SEE NOTES FOR TOLERANCES.						
DESCRIPTION: 93PS Marine 30-40 kW 3-phase Site Planning Data						
ORIGINATED: HUOTARI J.	25-AUG-2017	ECO:	NAME:	REVISION: 01	SIZE: A2	
MODIFIED:					SCALE: 7:100	
CHECKED:		DOCUMENT TYPE:			SHEET: 2 OF 7	
SAFETY:		PRO-E DRAWING				
APPROVED:						
EATON CORPORATION - CONFIDENTIAL AND PROPRIETARY						
NOTICE TO PERSONS RECEIVING THIS DOCUMENT AND/OR TECHNICAL INFORMATION						
THIS DOCUMENT, INCLUDING THE DRAWING AND INFORMATION CONTAINED THEREON, IS CONFIDENTIAL AND IS THE EXCLUSIVE PROPERTY OF EATON CORPORATION, AND IS HEREBY ON LOAN AND SUBJECT TO RECALL BY EATON AT ANY TIME. BY TAKING POSSESSION OF THIS DOCUMENT, THE RECIPIENT ACKNOWLEDGES AND AGREES THAT THIS DOCUMENT CANNOT BE USED IN ANY MANNER ADVERSE TO THE INTERESTS OF EATON AND THAT NO PORTION OF THIS DOCUMENT MAY BE COPIED OR OTHERWISE REPRODUCED WITHOUT THE PRIOR WRITTEN CONSENT OF EATON. IN THE CASE OF CONFLICTING CONTRACTUAL PROVISIONS, THIS NOTICE SHALL GOVERN THE STATUS OF THIS DOCUMENT.						
© 2011 Eaton Corporation - All Rights Reserved.						